

Project Introduction

Erasmus+ CBHE



Co-funded by
the European Union



THE-GLOW

Transdisciplinary Higher Education for Global Wellbeing

- Organizational development
- Academic human resource development
- Curriculum development
- Graduates with transdisciplinary competencies

Overall Objective

To **strengthen capacities** of Higher Education Institutions in Thailand and Europe, and eventually in countries neighbouring Thailand, to **develop and implement curricula** that train graduate students in the **transdisciplinary** approaches and competencies required for the future workforce to address complex global problems

Partner Institutions

Thailand

- **Asian Institute of Technology**
 - School of Environment, Resources and Development
 - Department of Development and Sustainability
- **Kasetsart University**
 - Faculty of Agriculture
 - Department of Entomology
 - Other departments
- **Thammasat University**
 - Faculty of Public Health
 - Graduate Studies in Global Health

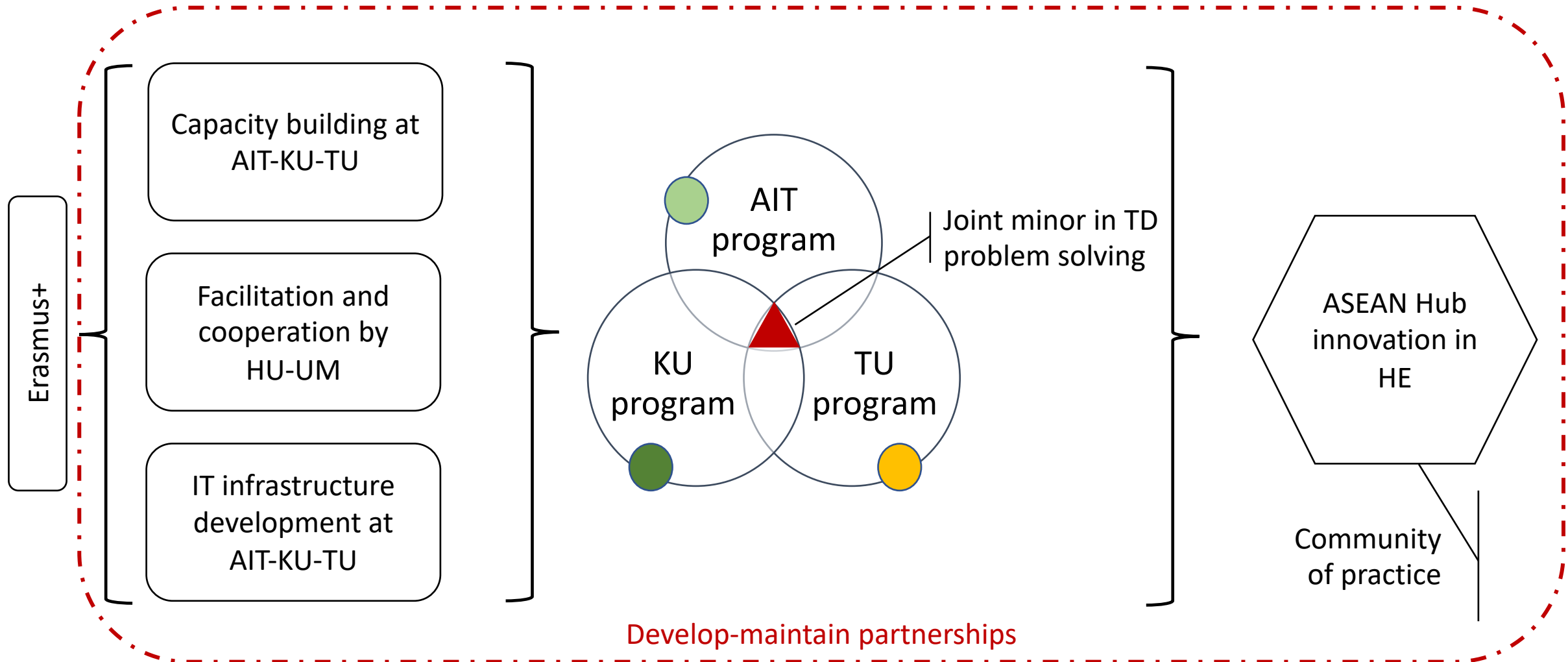
Europe

- **Heidelberg University - Germany**
 - Heidelberg Institute of Global Health
 - Global Health Policies and Systems

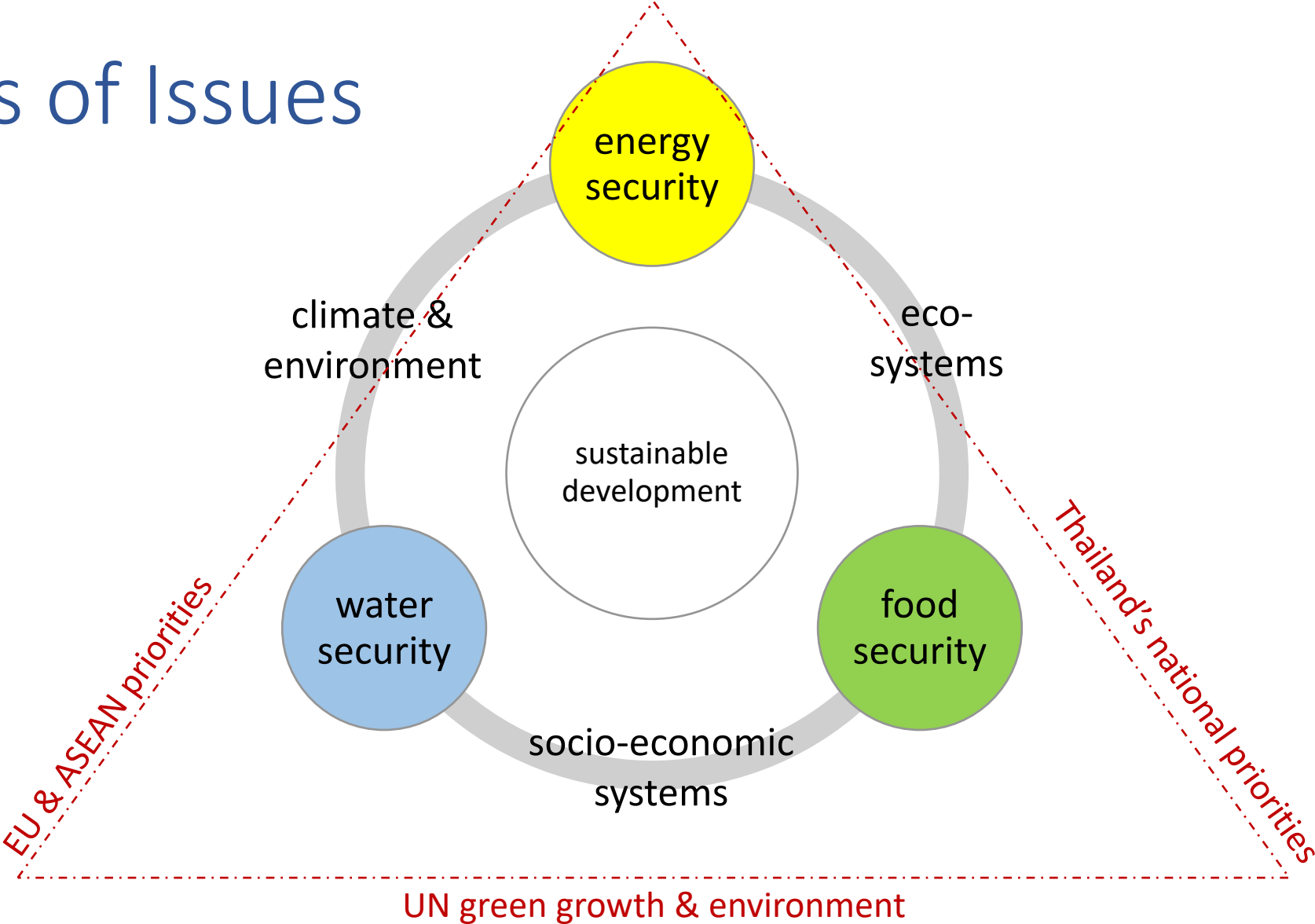
Instructional technologies and transdisciplinarity
- **Maastricht University - The Netherlands**
 - Faculty Health, Medicine and Life Sciences
 - The School of Health Professions Education

Problem-Based Learning, Blended Learning and transdisciplinarity

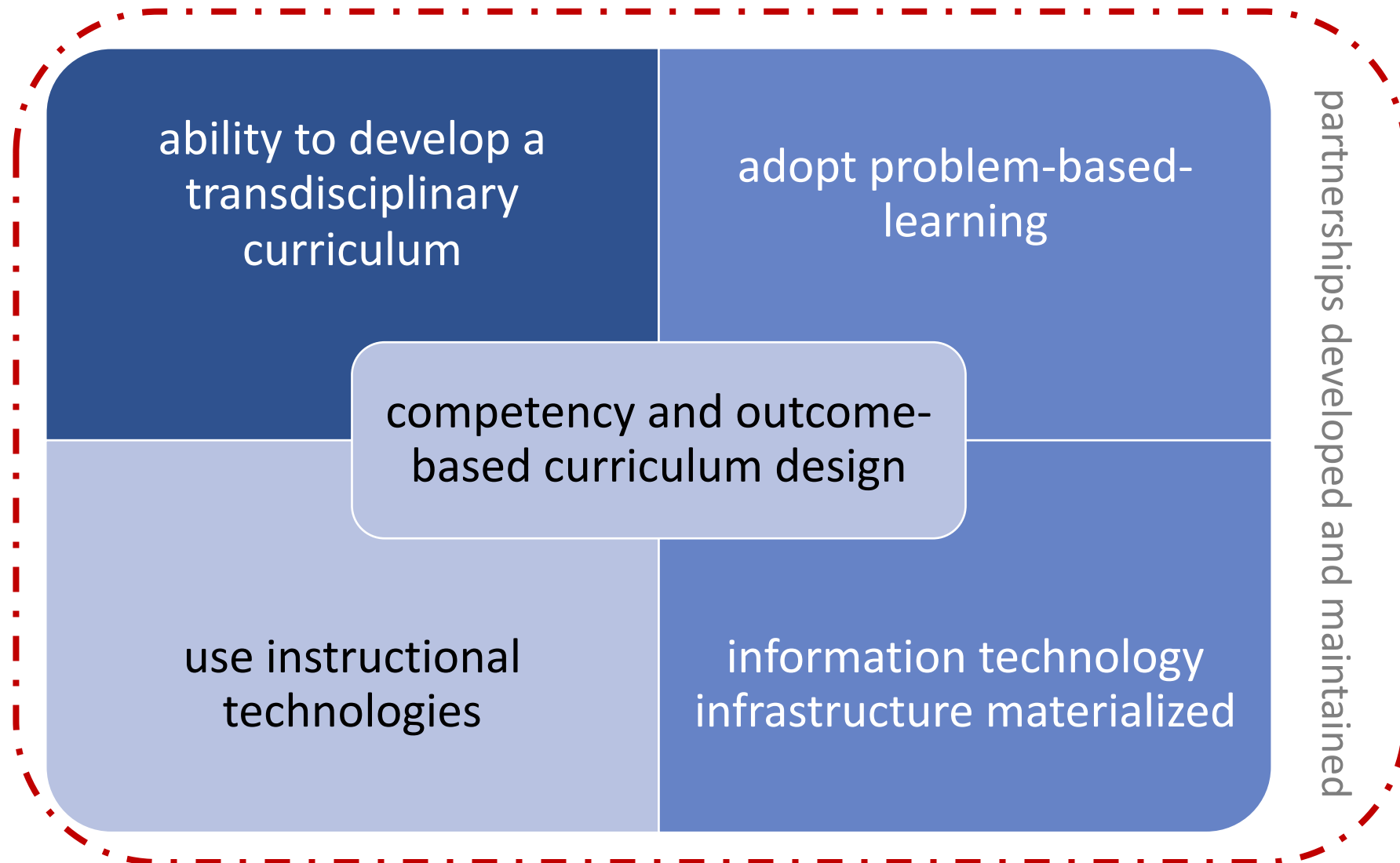
Project Framework



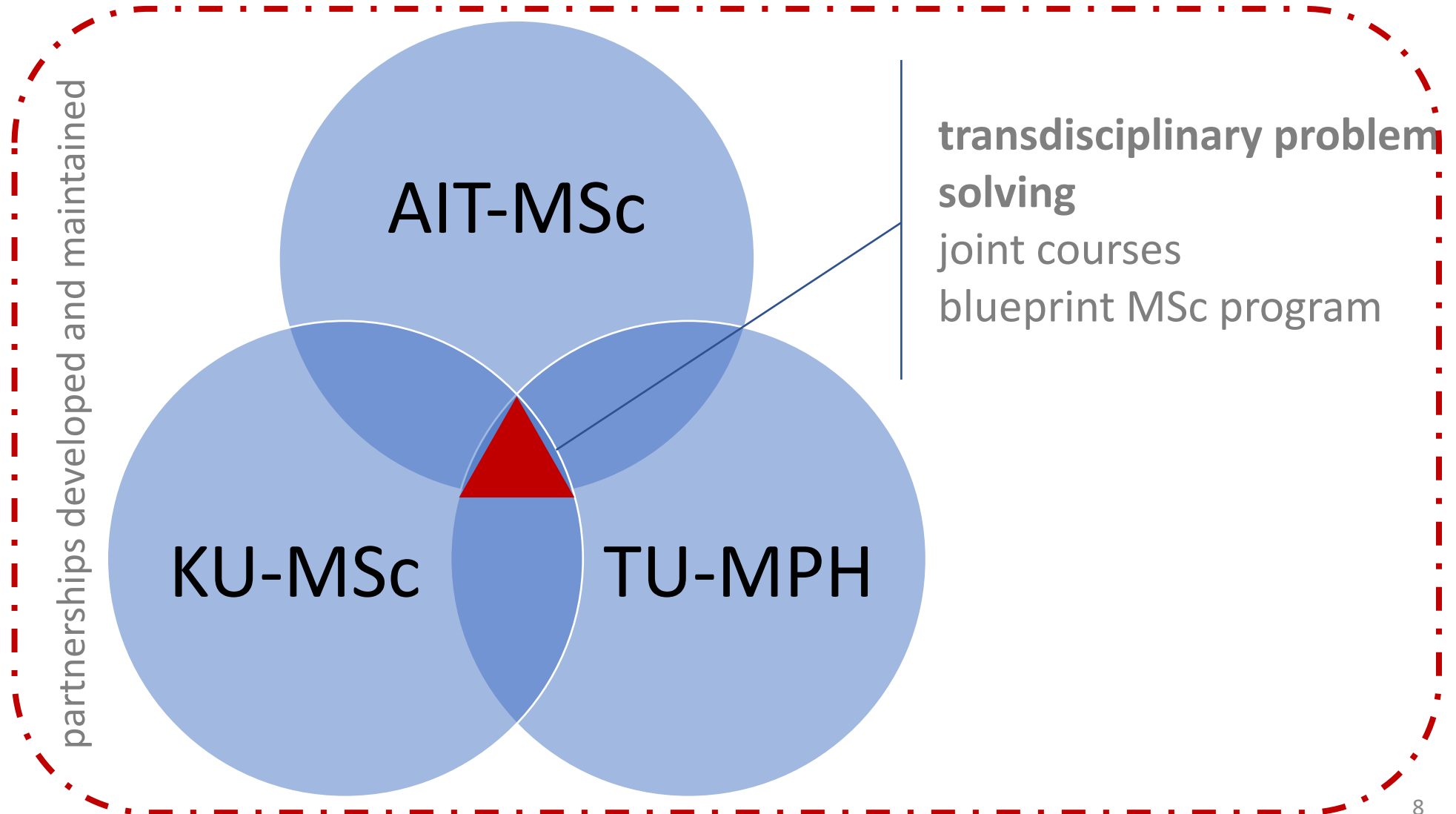
Nexus of Issues



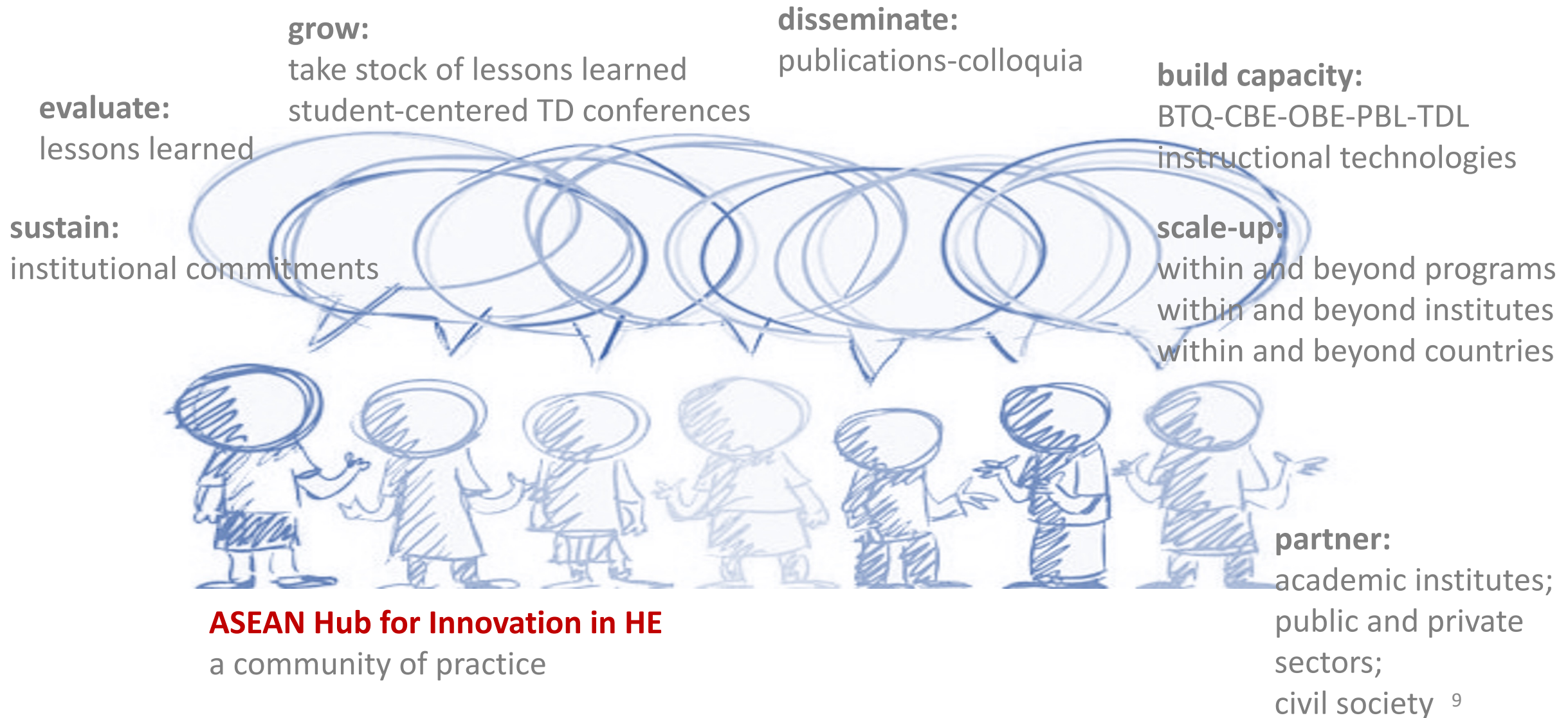
Capacity Building Deliverables



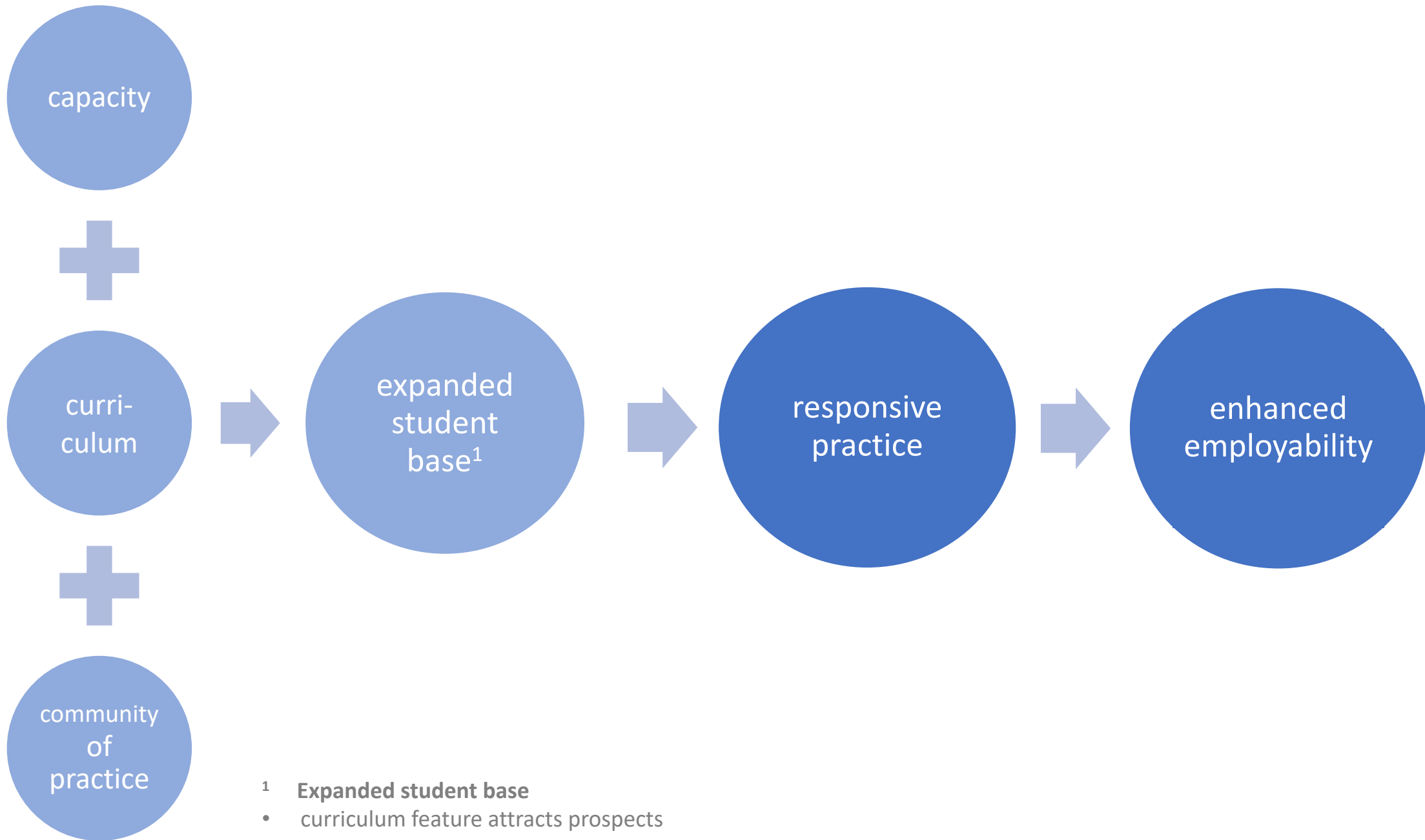
Curriculum Development Deliverables



Sustainability and Scaling Deliverables



Expected Outcomes



- ¹ **Expanded student base**
- curriculum feature attracts prospects
 - joint student cohorts across programs
 - continuing education opportunities

Work Packages

- WP1 Management and Coordination: TU
- WP2 Situation Analysis: TU
- WP3 Curriculum Development: UM
- WP4 Curriculum Delivery: AIT
- WP5 Information Technology: HU
- WP6 Partnering with Practice: KU
- WP7 Monitoring and Evaluation: HU
- WP8 Hub for Innovation in Higher Education: TU
(impact and dissemination)

	Year & Quarter	Y1 Q1	Y1 Q2	Y1 Q3	Y1 Q4	Y2 Q1	Y2 Q2	Y2 Q3	Y2 Q4	Y3 Q1	Y3 Q2	Y3 Q3	Y3 Q4
WP1: Management													
WP2 Situation Analysis													
WP3 Curriculum Development	3.1 Work package coordination												
	3.2 Round table HEI governance												
	3.3 Curriculum design courses 1-3				3.1								
	3.4 Curriculum design courses 4-6								3.2				
	3.5 Curriculum design ToT								3.3				
	3.6 Curriculum design courses 7-9												
	3.7 Blueprint MSc TD Practice												
WP4 Curriculum Delivery	4.1 Work package coordination											3.4	
	4.2 Marketing & student recruitment												
	4.3 Round table course delivery strategy & training												
	4.4 Mentoring instructors 1-3												
	4.5 Student support												
	4.6 Deliver courses 1-3								4.1				
	4.7 Mentoring instructors 4-6										4.2		
	4.8 Deliver courses 4-6												4.3
WP5 Information Technology	5.1 Work package coordination												
	5.2 Develop and implement an e-learning platform												
	5.3 Set-up e-learning systems				5.1								
	5.4 Guide the design of e-learning												
	5.5 Assist in webpage development												
	5.6 ICT capacity building and mentoring												
WP6 Partnering with Practice													
WP7 Monitoring and Evaluation													
WP8 Hub for Innovation	8.2 Create a community of practice												
	8.4 Strategic planning workshop												
	8.7 Establish the hub								8.2				
	8.8 Student centred conferences												
	8.10 Colloquium Thai Higher education institutions											8.3	